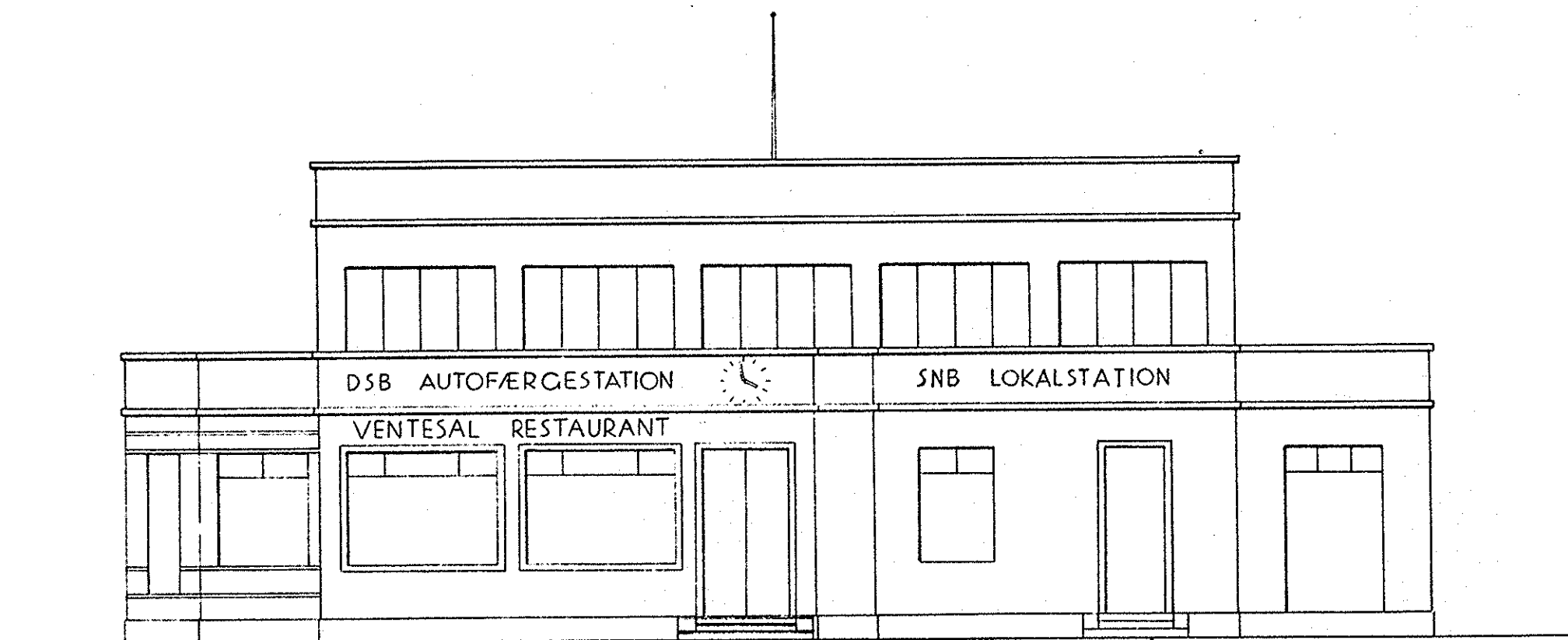
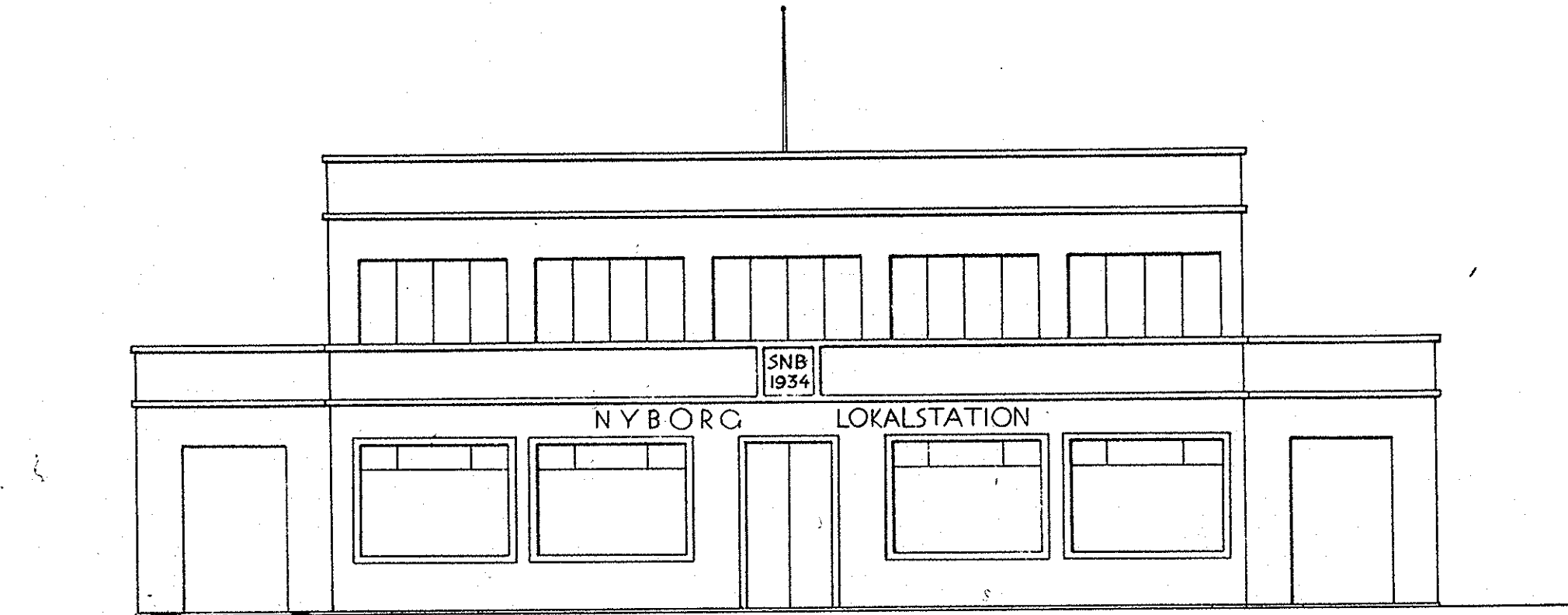


Svendborg-Nyborg Jernbane.
Maj 1933.

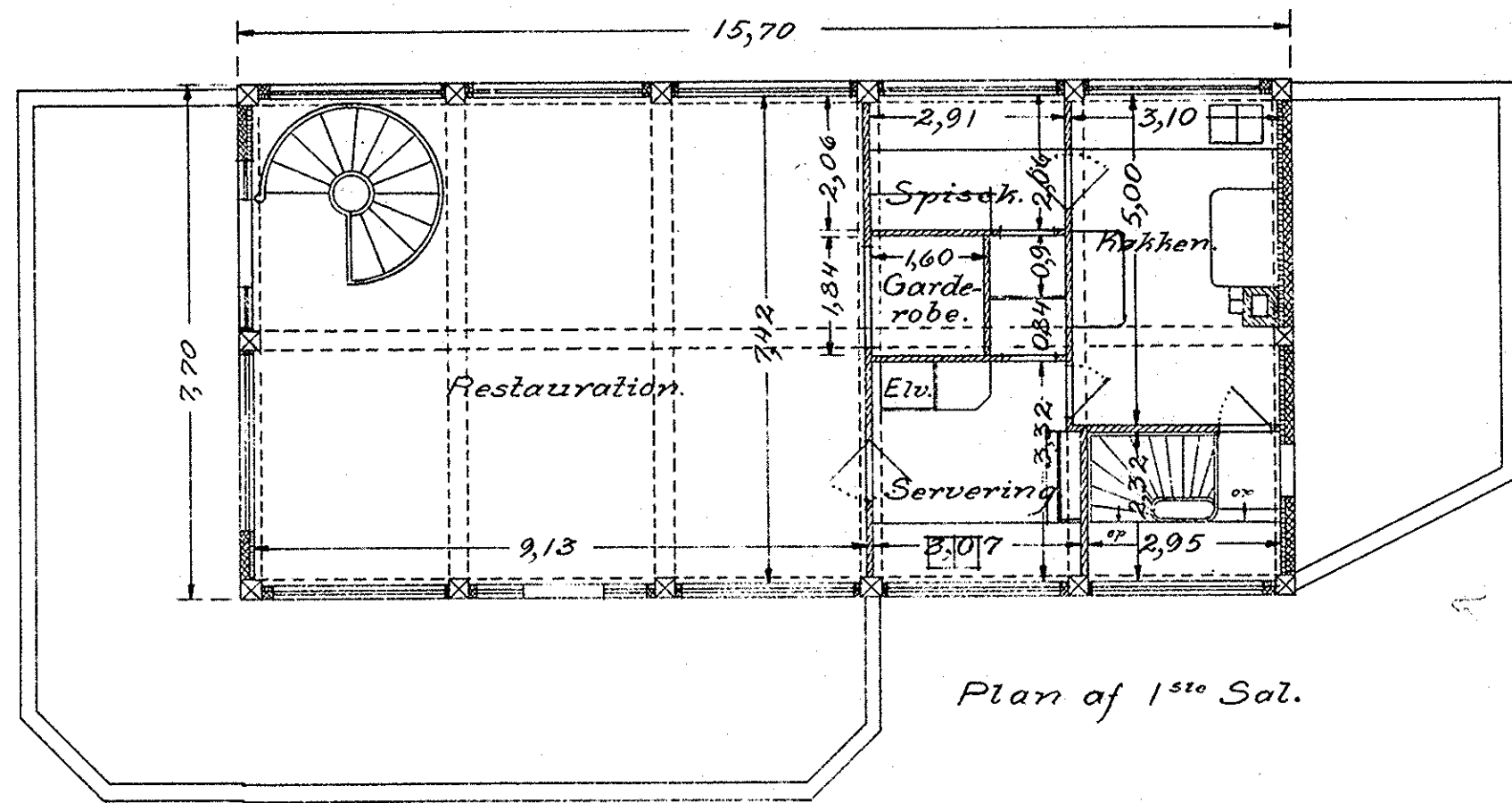
NY STATIONSBYGNING, NYBORG LOKAL.



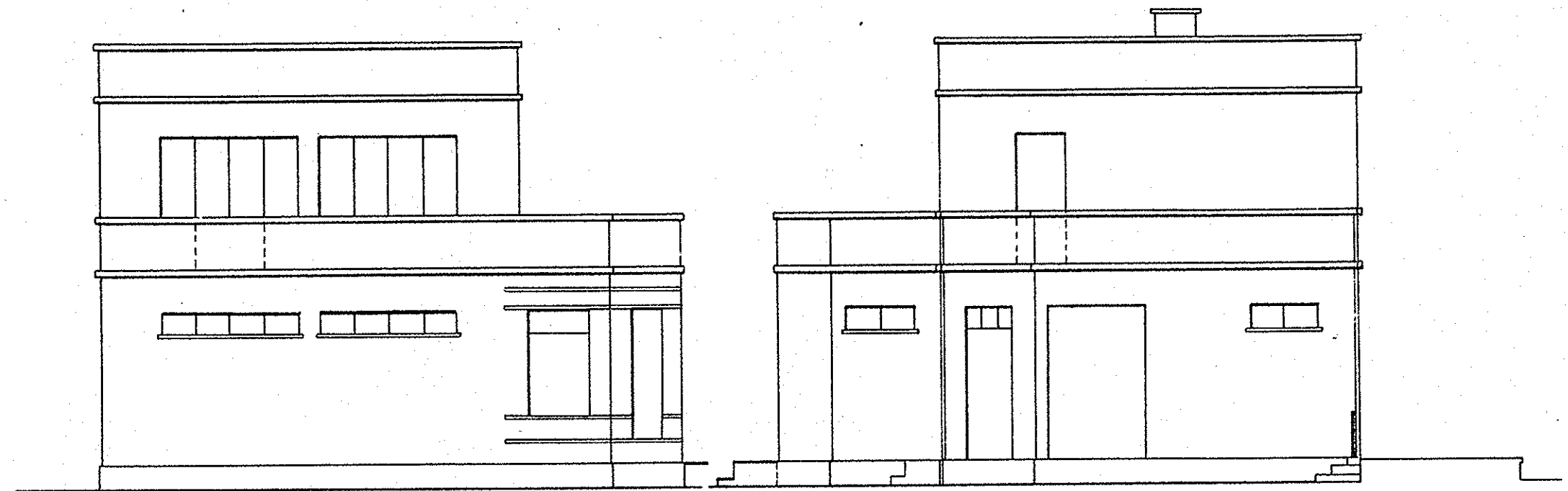
Facade mod Strandvejen.



Facade mod Perron.

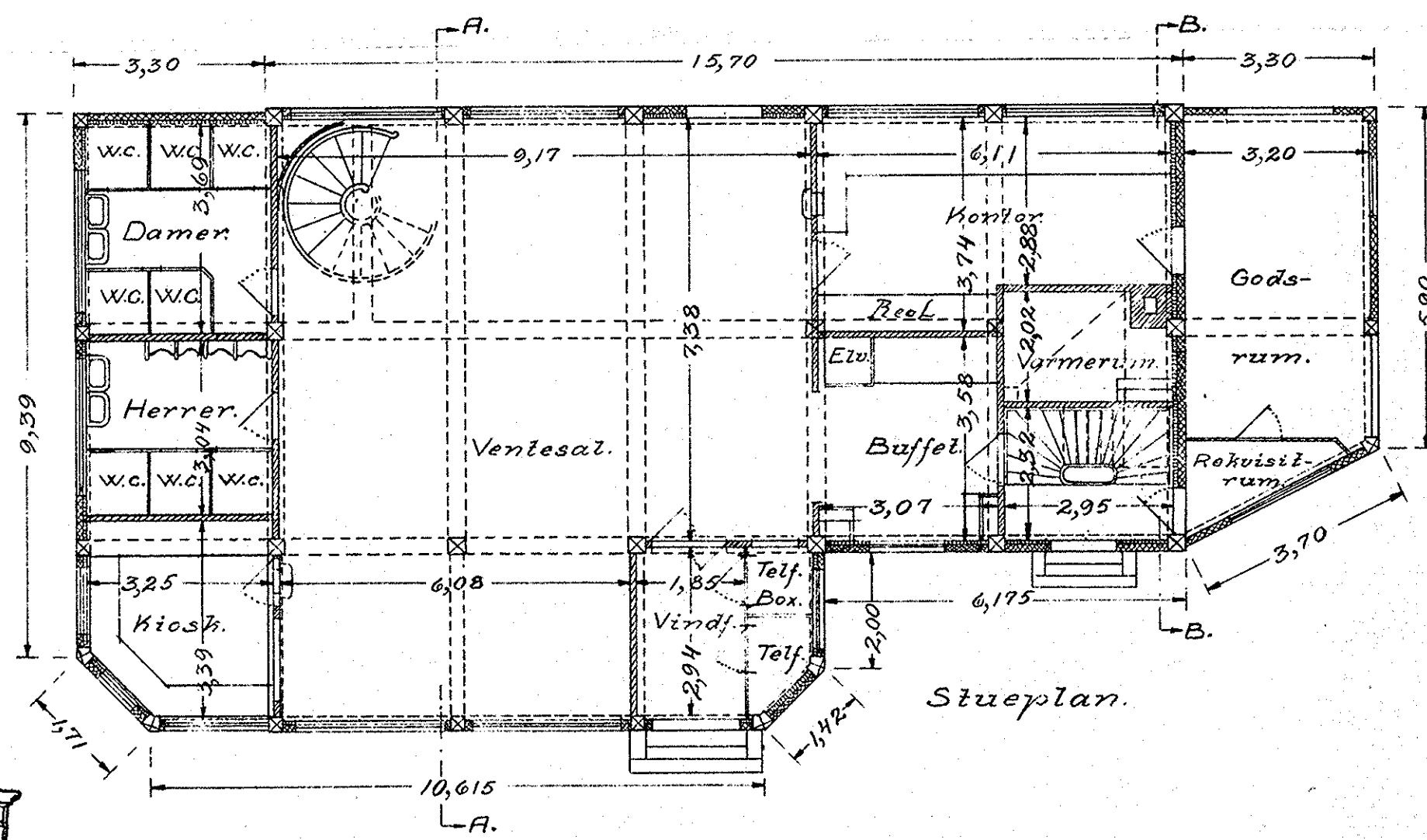


Plan af 1^{ste} Sal.

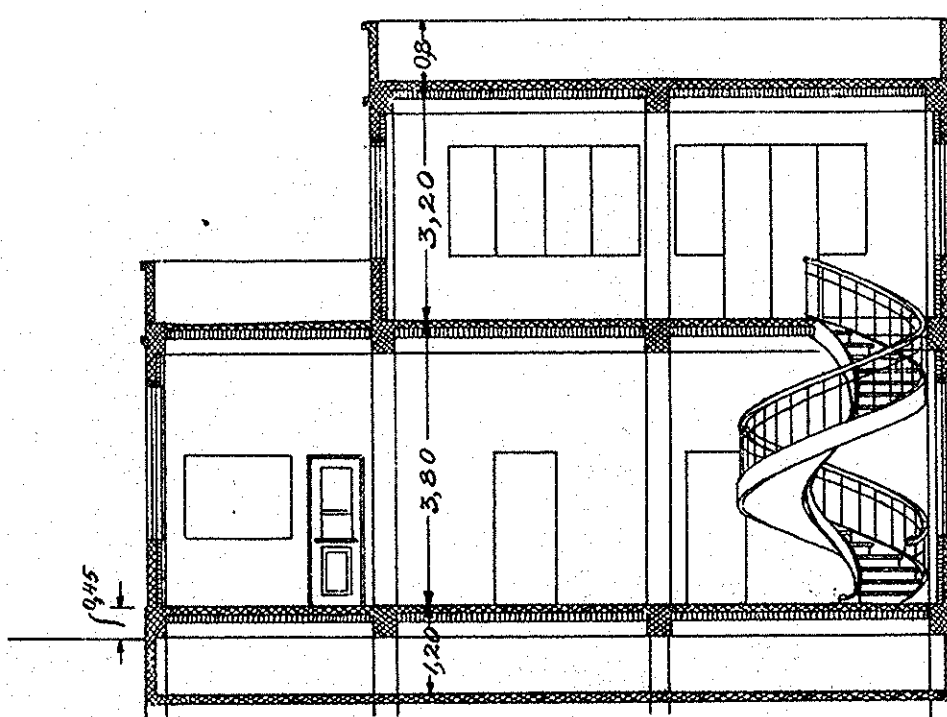


Mod Vest.

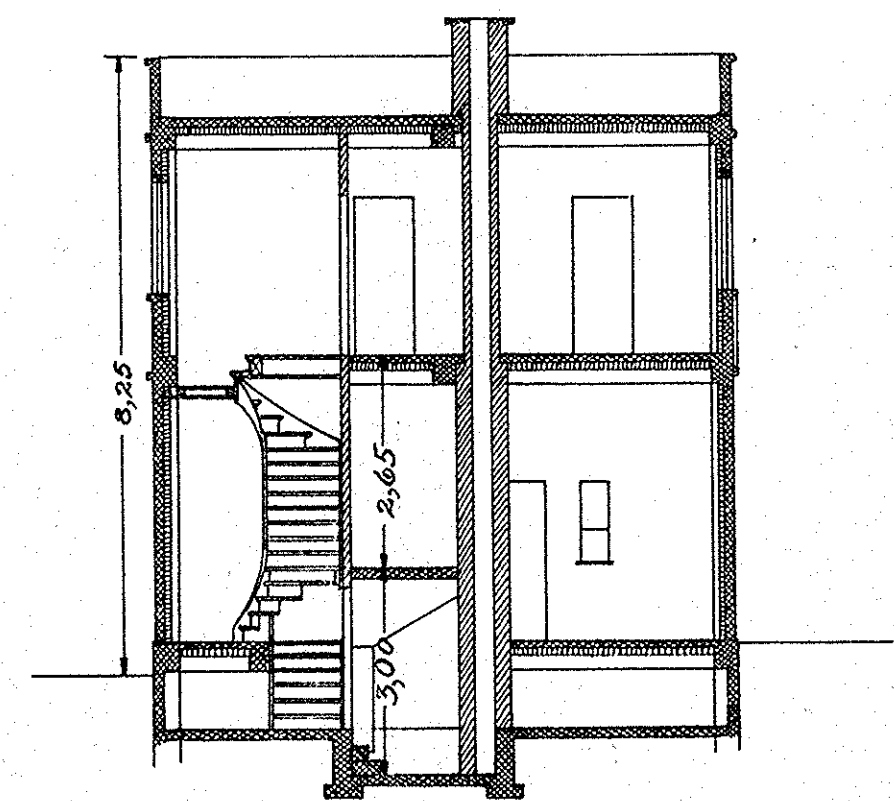
Mod Øst.



Stueplan.

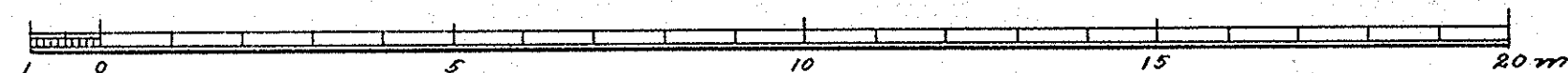


Snit A-A.



Snit B-B.

1:100.



Nyborg

SNB